

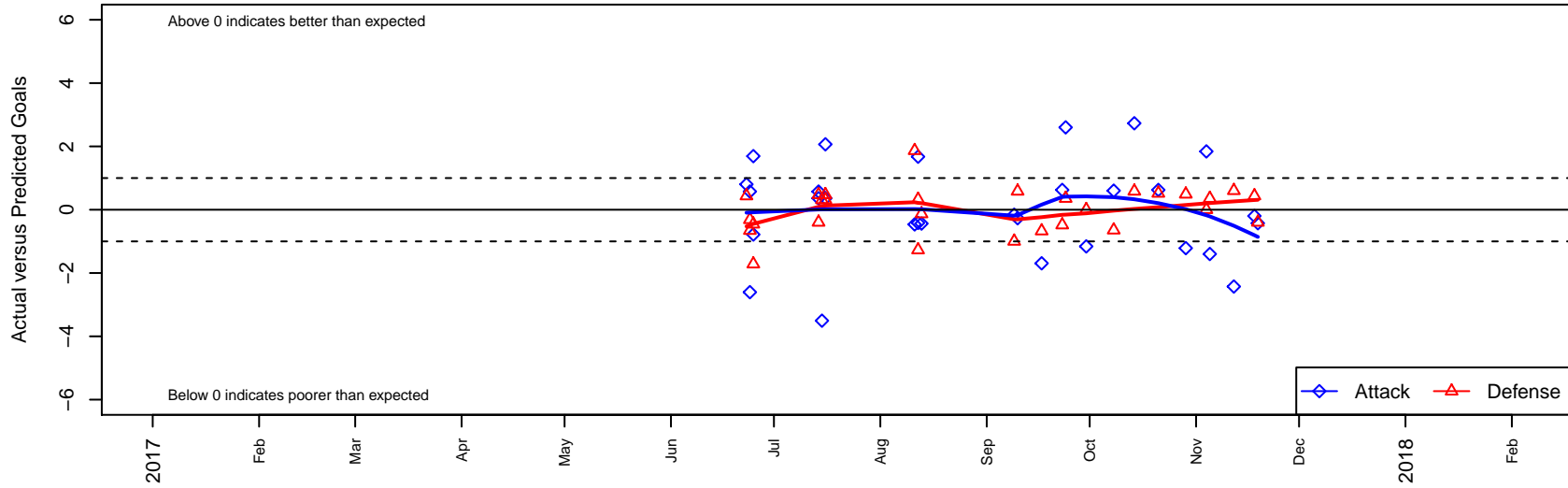
Washington Timbers Red 2 G05

Washington Timbers
 Vancouver, WA
 G05 total strength=1083
 attack=3.05 defense=2.33
 fall league = PTT G05 Div 1 Red SE

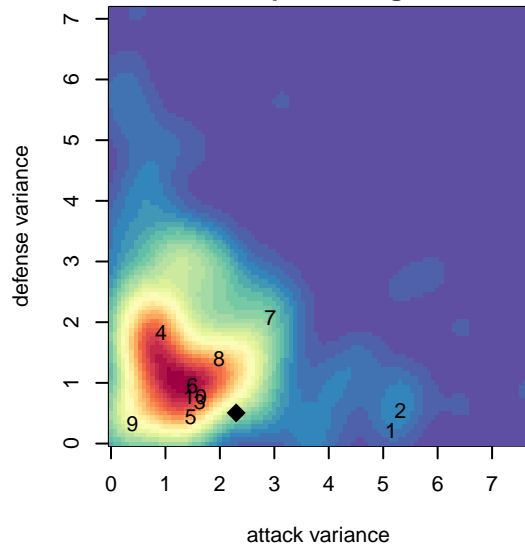
alt names used:
 WA Timbers 05G Red 2
 WA Timbers 05G Red 2
 WASHINGTON TIMBERRS FC WA TIMBERS |
 WASHINGTON TIMBERRS FC 05G RED 2
 WTFC G05 Red 2

Venues played:
 2017 Clash At the Border Gold/Silver/Bronze
 2017 Beaverton Cup U13 Silver
 2017 Bend Premier Cup Tobin Heath (Gold) Div
 2017 PTT G05 Division 1 Red SE
 2017 OYS PTT Presidents Cup G05

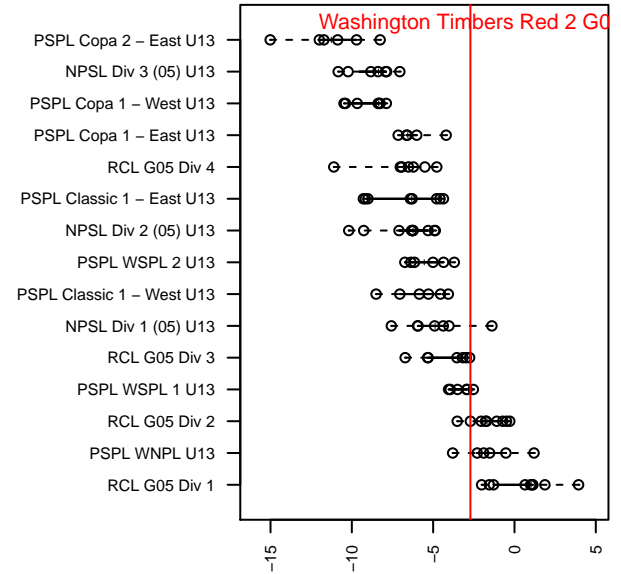
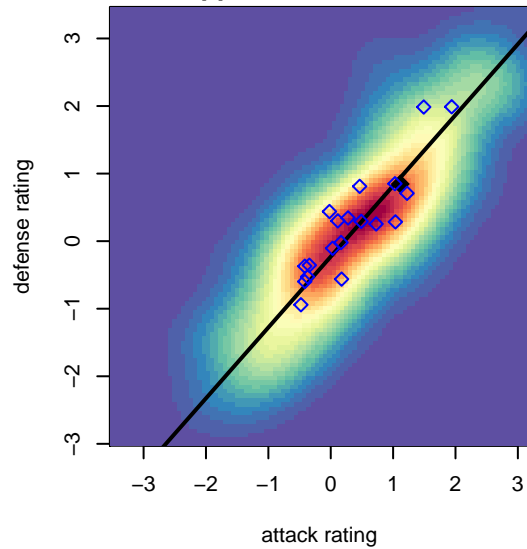
Washington Timbers Red 2 G05
 Dots are actual minus expected GF (blue circles) and GA (red triangles).
 Blue line is smoothed change in attack strength. Red is smoothed change in defense strength.



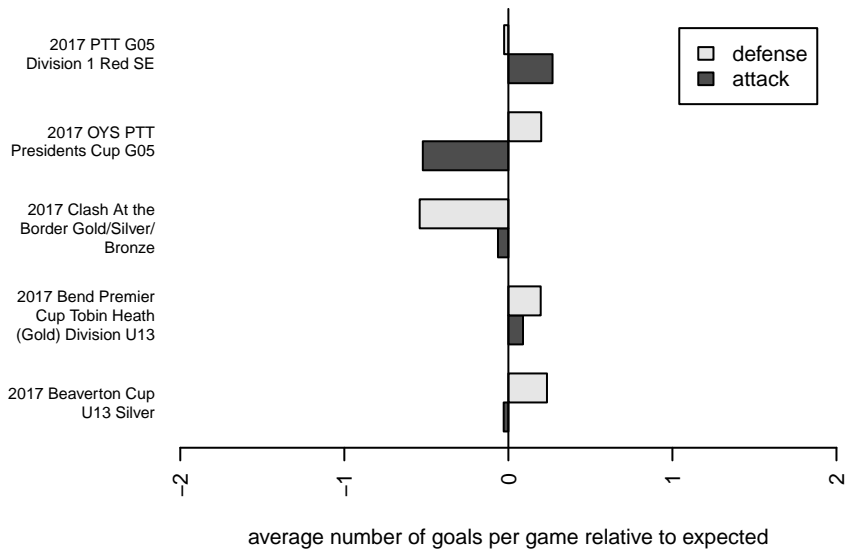
**attack and defense variance (black dot)
relative to other teams
and top 10 in region**



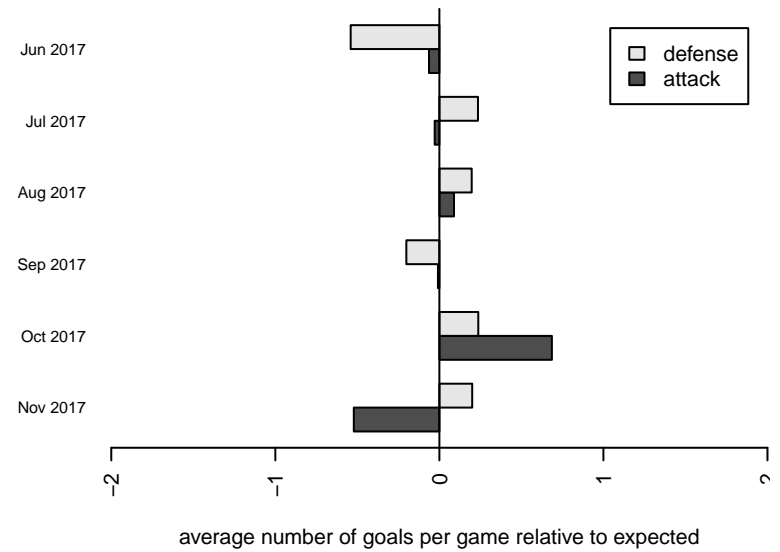
**attack and defense rating
relative to others at age
and all opponents in last 13 months**



Performance relative to 13 month average



Performance relative to 13 month average



ate	home		away		venue	pred.home	pred.av
'11-19	CSC Storm Navy G05	1	Washington Timbers Red 2 G05	2	2017 OYS PTT Presidents Cup G05	0.60	2.43
'11-18	Washington Timbers Red 2 G05	2	PCU Red 2 G05	0	2017 OYS PTT Presidents Cup G05	2.20	0.44
'11-12	Washington Timbers Red 2 G05	0	CSC Storm Navy G05	0	2017 OYS PTT Presidents Cup G05	2.43	0.60
'11-05	Eastside Timbers Red G05	0	Washington Timbers Red 2 G05	3	2017 OYS PTT Presidents Cup G05	0.36	4.40
'11-04	Washington Timbers Red 2 G05	4	Pacific FC Panthers G05	1	2017 OYS PTT Presidents Cup G05	2.16	1.00
'10-29	Washington Timbers Red 2 G05	2	Oregon Trails FC Storm G05	0	2017 PTT G05 Division 1 Red SE	3.21	0.49
'10-21	Washington Timbers Red 2 G05	3	CUSC Fusion G05	0	2017 PTT G05 Division 1 Red SE	2.38	0.52
'10-14	Washington Timbers Red 2 G05	8	FC Salmon Creek Nemesis White G05	0	2017 PTT G05 Division 1 Red SE	5.27	0.58
'10-08	Eastside Timbers Red G05	1	Washington Timbers Red 2 G05	5	2017 PTT G05 Division 1 Red SE	0.36	4.40
'09-30	Pacific FC Panthers G05	1	Washington Timbers Red 2 G05	1	2017 PTT G05 Division 1 Red SE	1.00	2.16
'09-24	Washington Timbers Red 2 G05	7	Eastside Timbers Red G05	0	2017 PTT G05 Division 1 Red SE	4.40	0.36
'09-23	CUSC Fusion G05	1	Washington Timbers Red 2 G05	3	2017 PTT G05 Division 1 Red SE	0.52	2.38
'09-17	Washington Timbers White 1 G05	1	Washington Timbers Red 2 G05	3	2017 PTT G05 Division 1 Red SE	0.33	4.69
'09-10	FC Salmon Creek Nemesis White G05	0	Washington Timbers Red 2 G05	5	2017 PTT G05 Division 1 Red SE	0.58	5.27
'09-09	Washington Timbers Red 2 G05	2	Pacific FC Panthers G05	2	2017 PTT G05 Division 1 Red SE	2.16	1.00
'08-13	FC Edmonds Quiet Riot G05	2	Washington Timbers Red 2 G05	0	2017 Bend Premier Cup Tobin Heath (Gold)	1.87	0.44
'08-12	Washington Timbers Red 2 G05	1	Capital FC Timbers Red G05	1	2017 Bend Premier Cup Tobin Heath (Gold)	1.42	1.32
'08-12	Washington Timbers Red 2 G05	3	Westside Timbers Copa TS G05	2	2017 Bend Premier Cup Tobin Heath (Gold)	1.33	0.73
'08-11	Washington Timbers Red 2 G05	0	NEU White G05	1	2017 Bend Premier Cup Tobin Heath (Gold)	0.46	2.87
'07-16	Washington Timbers Red 2 G05	8	Thelo Fusion G05	0	2017 Beaverton Cup U13 Silver	5.93	0.31
'07-16	Washington Timbers Red 2 G05	2	Seattle United Samba G05	1	2017 Beaverton Cup U13 Silver	1.64	1.47
'07-15	Washington Timbers Red 2 G05	1	LYS Red G05	0	2017 Beaverton Cup U13 Silver	4.51	0.31
'07-14	Seattle United Samba G05	1	Washington Timbers Red 2 G05	2	2017 Beaverton Cup U13 Silver	1.47	1.64
'07-14	CSC Storm Navy G05	1	Washington Timbers Red 2 G05	3	2017 Beaverton Cup U13 Silver	0.60	2.43
'06-25	FC Elk Grove Platinum 1 G05	3	Washington Timbers Red 2 G05	4	2017 Clash At the Border Gold/Silver/Bro	1.28	2.31
'06-25	Blackhills FC Black G05	1	Washington Timbers Red 2 G05	2	2017 Clash At the Border Gold/Silver/Bro	0.54	2.78
'06-24	Washington Timbers Red 2 G05	3	THUSC Neon Green G05	1	2017 Clash At the Border Gold/Silver/Bro	2.42	0.69
'06-24	Bend FC Timbers White G05	1	Washington Timbers Red 2 G05	5	2017 Clash At the Border Gold/Silver/Bro	0.35	7.60

date	home		away		venue	pred.home	pred.away
2017-06-23	Washington Timbers Red 2 G05	3	PCU Red 2 G05	0	2017 Clash At the Border Gold/Silver/Bro	2.2	0.44